



# Safeguarding Week 2025

## *Highlight & Impact Report*

Emily Thompson  
*Safeguarding Learning &  
Development Officer*

January 2026

# Contents

“

An excellent event, the buzz was infectious.

”

**Programme Lead,**  
*Gateshead Public Health*

“

This is an excellent initiative.

”

**Programme Lead,**  
*Gateshead Public Health*

“

A big thank you. I have found the sessions really informative.

”

**Assessing Officer,**  
*Gateshead Integrated Adults Social Care Service*

“

There were so many interesting things this week. I wish I'd had time to attend more!

”

**Mosaic Project Lead,**  
*Gateshead Children's Social Care and Lifelong Learning*

“

It was really good and a wide access of courses and learning.

”

**Community Nursery Nurse,**  
*Sunderland and South Tyneside NHS Foundation Trust*

## 01

Introduction & Headline Figures

## 02

Event Overviews & Evaluation Data



# 01

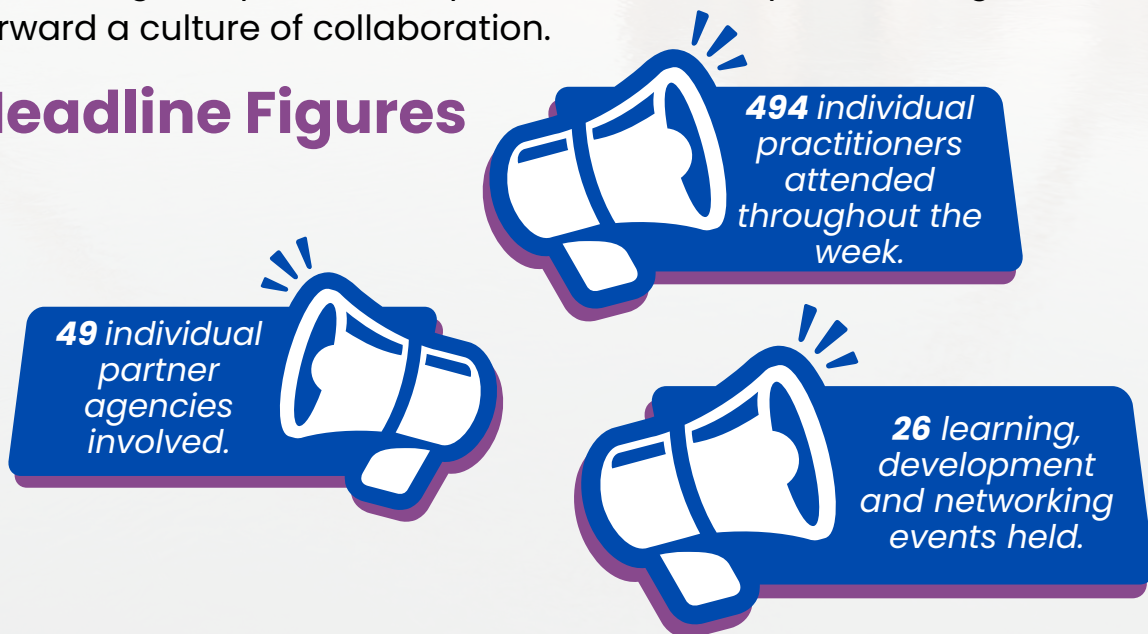
## Introduction & Headline Figures

Safeguarding Week is a national initiative which runs annually, supported by the Ann Craft Trust. This year's event once again saw the Gateshead Safeguarding Adults Board join forces with the Gateshead Safeguarding Children Partnership to facilitate a week of events, training and conversations centred on this year's key theme of **Prevention: Act Before Abuse**.

Between 17<sup>th</sup> November and 21<sup>st</sup> November 2025, we raised awareness of our strategic safeguarding priorities in Gateshead, celebrated examples of good practice, and worked collaboratively to identify areas for further development. Our rich programme of learning and networking opportunities equipped practitioners with the knowledge and tools to recognise and respond to specific safeguarding issues, strengthen multi-agency collaboration, and create safer environments for children, families and adults. Our focus on prevention and early intervention reinforced a clear message: safeguarding is everyone's business, and we must all work proactively to prevent harm before it occurs.

The week was a great success, demonstrated not only by the attendance and engagement of a diverse range of practitioners, partners, and community organisations, but also by the positive feedback captured after each session. The connections made and insights gained throughout Safeguarding Week will continue to inform and strengthen practice, inspire innovative ways of working, and drive forward a culture of collaboration.

## Headline Figures



*On behalf of the Safeguarding Business Unit, thank you for your continued support, engagement and enthusiasm.*



# 02

## Event Overviews & Evaluation Data

# Multi-Agency Networking Event

**Attendees: 76**

**Evaluation:** ☆☆☆☆

Our Multi-Agency Networking Event brought together practitioners from a wide range of agencies and sectors, creating valuable opportunities to connect, exchange insights and strengthen our shared commitment to safeguarding. The event highlighted the importance of partnership working in achieving good outcomes for children, families and adults; attendees engaged in thought-provoking discussions around current challenges and best practice, reinforcing a collective sense of responsibility and purpose. The event also enabled organisations to raise awareness of their respective offers, showcasing the wide range of resources and support available.

“It was useful to network with other service users, getting an understanding of what services are available to the public.”

**Oral Health Promoter,**  
Sunderland and South  
Tyneside NHS Foundation Trust

“I love the vast array of stalls in Bewicks, everyone was very engaging and I learned about organisations I didn't know existed.”

**Programme Lead,**  
Gateshead Public Health

“Events were informative and a good way to tell colleagues about the newly funded programs in Gateshead.”

**Advisory Teacher,**  
Gateshead Education, Schools  
and Inclusion

“I networked around the different agencies which was very informative. I made some key contacts from this.”

**Community Safety Officer,**  
Gateshead Community Safety

# Multi-Agency Networking Event

As part of our networking event, we also invited attendees to complete this sentence: **'Prevention starts with...'**  
They said:

“ Partnership working.”

“ Curiosity”

“ A culture of safety, to be curious and challenge.”

“ Sound relationships.”

“ Raising awareness.”

“ Understanding”

“ Working together and not saying 'it's not my job'.”

“ Being ready to listen to people.”

“ Communication”

“ Getting to the root cause.”

“ Safe places to talk.”

“ Understanding your responsibility.”

“ Feeling seen, heard and valued.”

“ Openness and honesty.”



# Multi-Agency Networking Event



“ I really enjoyed the morning and the chance to network with other services. ”

**Adult Safeguarding Nurse,  
Gateshead NHS Foundation  
Trust**



“ It was interesting to hear from other services. ”

**Families and  
Safeguarding Lead,  
Gateshead Recovery  
Partnership**

“ It was useful to learn about the different organisations that are out there and what they offer. ”

**Support Manager,  
The Coquet Trust**



# Half-Hour Highlights

**Attendees: 24**

Alongside our networking event, we ran five **Half-Hour Highlights**. These concise yet impactful training sessions were delivered by VCSE organisations, and aimed to:

- Raise awareness of the wide range of services and support available across Gateshead.
- Showcase innovative approaches to safeguarding.
- Provide practical insights grounded in real-world community experience.

Each highlight offered a focused opportunity to learn, share ideas, and strengthen connections, ensuring that practitioners left with a deeper understanding of how local organisations can work together to create safer environments.

## **North East Young Dads & Lads: Creating Inclusive & Empowering Environments**



North East Young Dads and Lads delivered a session in which they spoke about the work they do to create inclusive and empowering environments for young dads, ultimately supporting them in their role as parents and recognising the role of fathers in the safeguarding process. The session aligned with learning identified in recent rapid reviews carried out by the GSCP, where risks surrounding 'hidden males' have been identified.

“

I liked that the training was only 30 minutes to keep engagement.

”

**Social Work Trainee,**  
Gateshead Integrated Adults  
Social Care Service

“

I have reached out to NEYDL to work closer with them.

”

**Programme Lead,**  
Gateshead Public  
Health

# Half-Hour Highlights

## **Compassionate Gateshead: Improving Experiences of Dying, Death, Grief & Caring**



Compassionate Gateshead's session addressed the emotional and practical challenges faced by families and communities during times of caring, bereavement and grief. By sharing approaches that foster resilience and wellbeing, this session supported the GSAB and GSCP's strategic aim of improving experiences for those navigating difficult circumstances, ensuring that safeguarding practice is compassionate and person-centred.



“ Sessions were very well presented and presenters were knowledgeable. I will be spreading the word to others. ”

**Assessing Officer,**  
Gateshead Integrated Adults  
Social Care Service



## **RISE North East: Celebrating Safer Environments in Sport**



RISE North East's session was not just about sport - it was about the importance of embedding and strengthening safeguarding principles in community settings. Throughout, RISE emphasised good practice and resources available to those working with children and adults in community settings, aligning with both the GSAB's focus on prevention, and with the GSCP's strategic priority of strengthening child protection practice overall.

“ Very informative discussions/useful materials. ”

**Designated Nurse,**  
North East and North  
Cumbria ICB

“ It was very useful to find out how to support service users with death. ”

**Social Worker,**  
Gateshead Integrated  
Adults Social Care Service

# Half-Hour Highlights

## **Carer's Federation: Family Caregivers & Safeguarding**

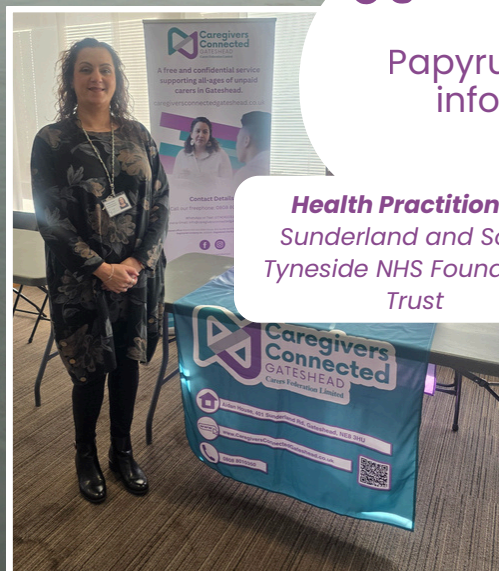


Carer's Federation teamed up with the Safeguarding Business Unit to deliver a session on family caregivers and safeguarding, highlighting the risks and protective factors within caregiving relationships. Practitioners considered the challenges caregivers face, and how these often intersect with safeguarding issues, aligning with the GSAB's strategic priorities of preventing harm and strengthening safeguarding, as well as the GSCP's strategic priorities of strengthening child protection practice (including identifying and responding to neglect), and improving the mental health of children and young people who may be at greater risk of harm.

## **Papyrus: SPARK Suicide Awareness**



Our final half-hour highlight – Papyrus' Suicide Awareness session – equipped practitioners with practical tools to identify early warning signs of suicidal ideation and respond appropriately. The session raised awareness of risk factors and intervention strategies, aligning with both the GSAB's focus on prevention and the GSCP's focus on improving the mental health of children and young people in need of protection from harm.



“

Papyrus was very informative.

”

**Health Practitioner,  
Sunderland and South  
Tyneside NHS Foundation  
Trust**

### **Strategic Priorities**

**GSCP: Child Protection Practice**

**GSCP: Neglect**

**GSCP: Mental Health**

**GSAB: Strengthening Safeguarding**

**GSAB: Learning & Development**

**GSAB: Prevention of Harm**

**GSAB: Involvement & Engagement**

# The Journey of Adult L

**Attendees: 27**

**Evaluation:** ☆☆☆☆

This session - led by Sue Walters, author of the GSAB's recent Appreciative Inquiry - offered a thought-provoking exploration of Adult L's life. Practitioners reflected on the Time to Think methodology, considering ways in which this approach can be implemented within their respective service areas to change the conversations we have about safeguarding.

Throughout the session, practitioners explored the impact of trauma, mental health challenges, alcohol misuse and acquired brain injury, domestic abuse, homelessness, and children being removed from their parents' care. Whilst these themes were examined primarily through an adult safeguarding lens, discussions highlighted how earlier intervention during childhood and adolescence may have reduced the risk of harm later in life.

Many of the challenges Adult L faced are often rooted in formative life experiences; practitioners reflected on the importance of understanding the link between trauma and wellbeing, stronger multi-agency responses and transitions between services, and a 'whole-life' approach to safeguarding.

“  
Sue was great as a presenter. I learned a lot.  
”

**Anonymous**

“  
Sue was very engaging and knowledgeable.  
”

**Anonymous**

“  
I enjoyed the collaboration with colleagues.  
”

**Contracts and Performance Officer,  
Strategic Housing and Residential Growth**

“  
Led in such an informative and thought provoking way. Great engagement from a range of professionals, sharing their experiences.  
”

**Community Nursery Nurse,  
Sunderland and South Tyneside  
NHS Foundation Trust**

## **Strategic Priorities**

GSAB: Child Protection Practice

GSAB: Neglect

GSAB: Domestic Abuse

GSAB: Mental Health

GSAB: Strengthening Safeguarding

GSAB: Learning & Development

GSAB: Prevention of Harm

GSAB: Involvement & Engagement

# The Journey of Adult L

## Measuring Impact

We asked attendees: ***how do you intend to apply your learning to your practice moving forward?*** They said:

- "I will discuss with staff, reflect on my own practices, thinking of the whole family and life experiences of all members."
- "It would be excellent if all services could be offered further insight."
- "I intend to more aware of when someone may be falling through a gap and to think about how support could be offered."
- "Using the thinking circle approach /learning about ABI and applying it compassionately to an individual."
- "The team I am currently in is reviewing a young persons pathway through housing from when they leave care and within this we will think a bit more about the girls/women we see and how we can ensure adequate support for them through the process."

We also asked: ***are there any aspects of the training that could be improved?*** They said:

- "It would have been nice if other colleagues who might feel their role is slightly removed from the topic to attend as the people we spoke to were social workers, housing workers, the more frontline type staff and it would be good for the council as a whole to understand some of the issues that Gateshead residents face and that a little bit of information that colleague might see/hear could be important."
- "This training focused on the models used during the inquiry and on the systemic change needed. It felt more like the change is needed from a commissioning level than as an individual worker."

“  
*It was interesting to hear about how each form of deprivation Sam experienced fed into the whole picture.*”

*Anonymous*

“  
*I found the letter and background of the individual very powerful. It framed conversations really well.*”

*Anonymous*

# Vaping & Young People

**Attendees: 8**

**Evaluation:** ☆☆☆☆☆

This session – delivered by Positive Futures – addressed the growing concern around vaping among young people. Practitioners explored established and emerging risks, types of harm and early intervention strategies, whilst also considering contextual safeguarding issues that may be linked to vaping: exploitation, substance misuse and health vulnerabilities, aligning with the GSCP’s strategic aim of strengthening child protection practice.

## Measuring Impact

We asked attendees: **how do you intend to apply your learning to your practice moving forward?** They said:

- “I will share the video and information with schools.”
- “I will make others aware of the service.”
- “I will have more informal chats with the youths I work with.”
- “Provide some training/resources to our holiday club providers and perhaps arrange some outreach sessions from the team to visit some clubs.”
- “I have told my colleagues about Positive Futures.”

We also asked: **are there any aspects of the training that could be improved?** We did not receive any feedback in response to this question.

“  
Very useful information  
about the law. The  
presenters really know  
their subject.”

**HAF Coordinator,**  
Community, Health and  
Wellbeing

“  
The vaping session was  
great as there were  
plenty of questions and  
the trainers explained  
things very clearly.”

**Peer Mentor Coordinator,**  
Change, Grow, Live

### **Strategic Priority Areas**

GSCP: Child Protection Practice  
GSCP: Mental Health

# Preventing Homelessness: Housing First

**Attendees: 18**

**Evaluation:** ☆☆☆☆

Gateshead Council colleagues shared details of a new initiative - Housing First - with practitioners in this session, highlighting the ways in which the programme functions as a preventative and supportive safeguarding measure for individuals with multiple and complex needs. Practitioners developed their understanding of the process, including how multi-agency panels work collaboratively to overcome barriers that may otherwise increase risk of harm.

## Measuring Impact

We asked attendees: ***how do you intend to apply your learning to your practice moving forward?*** They said:

- "I will think about this initiative for our clients and spread the information to different teams."

We also asked: ***are there any aspects of the training that could be improved?*** We did not receive any feedback in response to this question.



### **Strategic Priorities**

GSAB: Strengthening Safeguarding  
GSAB: Learning & Development  
GSAB: Prevention of Harm  
GSAB: Involvement & Engagement

“  
The presenters were very engaging. The whole course was very informative.”

**Social Work Trainee,**  
Gateshead Integrated Adult  
Social Care Service

“  
It was very informative; the information linked in very well with my role and the ASC function.”

**Initial Contact Coordinator,**  
Gateshead Integrated Adult  
Social Care Service

# Department of Work & Pensions: Recognising & Responding to Abuse & Neglect

Attendees: 205 Evaluation: ☆☆☆☆

Colleagues from the Gateshead Safeguarding Business Unit delivered a bespoke workshop to DWP colleagues on the core principles of adult safeguarding. The session covered: recognising different types of abuse, responding effectively to disclosures and concerns, the importance of professional curiosity and making safeguarding personal, and the role of multi-disciplinary working in managing risk.

## Measuring Impact

DWP asked attendees to share their views on:

### **Content**

● Good ● Excellent



### **Presentation Style**

● Good ● Excellent



### **Presenter Knowledge**

● Good ● Excellent



“Engaging and knowledgeable presenters.”

“Clear, informative content with practical examples.”

“Analogies and real-life scenarios to explain complex topics.”

### **Strategic Priority Areas**

GSAB: Strengthening Safeguarding  
GSAB: Learning & Development  
GSAB: Prevention of Harm  
GSAB: Involvement & Engagement

“I enjoyed the interactive elements.”

“Immediate applicability (one attendee made a referral straight after the session).”

# Working with High-Risk Alcohol Dependence

**Attendees: 11**

**Evaluation:** ☆☆☆☆☆

Members of Gateshead Council's Adult Social Care team delivered an engaging session on working with high-risk alcohol dependence, equipping practitioners with the knowledge and skills to respond effectively to the realities of dependent drinking and its impact on individuals, families and communities. Attendees discussed practical strategies for supporting change-resistant individuals, developed their understanding of fluctuating capacity and learnt more about legal frameworks and approaches to harm reduction, aligning with the GSAB's priorities of prevention of harm and strengthening safeguarding.

## Measuring Impact

We asked attendees: **how do you intend to apply your learning to your practice moving forward?** They said:

- "I will ensure I am getting second opinions if I'm ever unsure about someone's capacity to act - especially when/if this is something that fluctuates."
- "Referring for support and assessing capacity."

We also asked: **are there any aspects of the training that could be improved?** They said:

- "More time for real world case studies and discussions."

### **Strategic Priorities**

GSAB: Strengthening Safeguarding  
GSAB: Learning & Development  
GSAB: Prevention of Harm

*"The way the subject was approached was fantastic. Case examples were of highlight, showing how services can work successfully together."*

**Safeguarding Hub Officer,**  
Gateshead Integrated Adult Social  
Care Service

# Working with High-Risk Alcohol Dependence

“

*There was a good mix of agencies and lots of discussion through different lenses. It was very enjoyable and informative.*

”

**Social Worker,**  
Gateshead Integrated Adult  
Social Care Service

“

*I don't work in a role where these skills will be applied but hope to achieve a role like this in the future. This has given a section of knowledge that I need moving forward.*

”

**Assessing Officer,**  
Gateshead Integrated Adult  
Social Care Service

“

*It was really interesting to hear the different perspectives from other service providers such as the Police and seeing how these inform practice.*

”

**Assessing Officer,**  
Gateshead Integrated Adult Social  
Care Service

# DBS Workshops: Eligibility & Disclosure Legal Duty to Refer

**Attendees (Eligibility & Disclosure): 12**  
**Attendees (Legal Duty to Refer): 8**

Our DBS Regional Outreach Adviser, Becky Robinson, delivered two sessions focused on raising practitioner awareness of DBS services. Practitioners discussed different levels of DBS checks, unpicked the meaning of 'regulated activity', and discussed when legal duty to refer is met - including how to make a good quality referral.

“  
*This has been very helpful. Thank you Becky. It was lovely meeting you.*  
”

*Anonymous*

“  
*That was really interesting and good to refresh my knowledge.*  
”

*Anonymous*

## **Strategic Priority Areas**

*GSCP: Child Protection Practice*

*GSAB: Strengthening Safeguarding*

*GSAB: Prevention of Harm*



# Hidden Harm: Parental Substance Misuse

**Attendees: 10**

**Evaluation:** ☆☆☆☆☆

Positive Futures returned for a second day to deliver an overview of hidden harm, exploring the impact of parental substance misuse on a child's health, wellbeing and safety. Strong emphasis was placed on the importance of professional curiosity, which is a common theme throughout all safeguarding children reviews nationally; practitioners explored the links between parental substance misuse, adverse childhood experiences and trauma, whilst sharing practical strategies to support children and families affected.

## Measuring Impact

We asked attendees: **how do you intend to apply your learning to your practice moving forward?** They said:

- "Through referrals and signposting to the services available."

We also asked: **are there any aspects of the training that could be improved?** They said:

- "This session wasn't as long as the vape session, felt there could maybe be a little more detail next time."

“

*The session had a really good mix of emotive reasoning as well as information and statistics.*

”

*Peer Mentor Coordinator,  
Change, Grow, Live*

“

*The ladies that presented this session were excellent.*

”

*Family Support Worker,  
St. Chad's Community Project*

## **Strategic Priorities**

GSCP: Child Protection Practice  
GSCP: Neglect  
GSCP: Domestic Abuse  
GSCP: Mental Health

# Recovery Connections: Recovery Ally Training

**Attendees: 17**

**Evaluation:** ☆☆☆☆

Recovery Connections joined us to deliver their incredibly powerful Recovery Ally training, a session which amplified the voices of those with lived experience of addiction. Practitioners were challenged to consider their individual roles in replacing stigma with understanding, empathy and support, doing so through a guided exploration of the CHIME model and the complex realities of addiction. The session not only aligned with the strategic priorities below, but also learning identified in our recent Appreciative Inquiry (Adult L).

## Measuring Impact

We asked attendees: **how do you intend to apply your learning to your practice moving forward?** They said:

- "I will be intentional about using 'non-stigmatising' words and appropriate language."
- "I will use the CHIME model for recovery conversations."
- "I will be more aware of language with professionals and service users."

We also asked: **are there any aspects of the training that could be improved?** We did not receive any feedback in response to this question.

“  
Sharing of lived experiences; discussions and sharing knowledge and experience in professional roles was useful.”

**Domestic Abuse Worker,**  
Neighbourhood Relations  
Team

### Strategic Priority Areas

GSAB: Strengthening Safeguarding  
GSAB: Learning & Development  
GSAB: Prevention of Harm  
GSAB: Involvement & Engagement



“  
One of the best I have ever attended. Refreshing to have a positive view of recovery. The speakers were excellent and the subject matter covered sensitive and informative.”

**Community  
Bridgebuilder,  
Teams and Dunston  
Alive**

# The Relationship Between Trauma & Wellbeing

**Attendees: 36**

**Evaluation:** ☆☆☆☆

Jude Sellen-Cole's powerful keynote lecture on the relationship between trauma and wellbeing gave practitioners the time and space to reflect on trauma as a recurrent theme across safeguarding issues that they encounter in their respective areas of work. Though the session did not focus on specific challenges or cases, a thorough exploration of the history of trauma and how it manifests itself clearly resonated with those in attendance - validating the emotional challenges of those we support and those faced by practitioners. The session prompted dynamic discussions about how we develop resilience, how we empathise and engage with others, and how we develop holistic interventions to prevent further harm.

## Measuring Impact

We asked attendees: ***how do you intend to apply your learning to your practice moving forward?*** They said:

- "I will use this to help my service understand the relationship between wellbeing and trauma - for staff as well as clients and understanding presenting behaviours."
- "I want to keep the reminder that trauma is a wound."
- "Incorporating some of the ideas and information into our own trauma training."
- "I now have a greater understanding of trauma and the importance of looking after ourselves."
- "I intend to read up on the model we discussed and how this can be applied to my practice."
- "Understanding SIBAM and the history of trauma to know where people's own perceptions are 'at'/shaped by."
- "I will always consider this: 'we run towards what we know.'"

# The Relationship Between Trauma & Wellbeing

We also asked: **are there any aspects of the training that could be improved?** They said:

- "I think the trauma session could easily have been a full day to explore more aspects in more depth."
- "Whilst the history is relevant, it was to the detriment to current issues and discussions. Maybe a better balance given the 2 hour slot."
- "I would've loved to be there longer for more time - Jude was an exemplary speaker and SO engaging."
- "I wish the session had been longer as it was clearly rushed at the end of it. While Jude has promised the slides it felt like she so often spoke around the slides in a really enriching way and it would have been wonderful to hear her perspective on them. The SIBAM activity was a great idea but my group got a bit confused around what was meant by some of the terms so it would have been useful to have had those expanded on better before the activity."

“It was so helpful to put our current understanding of trauma into this context. I enjoyed the interactive aspects, and Jude's knowledge on the subject.”

**Consultant Clinical Psychologist,**  
Gateshead Children Social Care  
and Lifelong Learning

“Jude's wealth of knowledge is fantastic and delivery style so engaging.”

**Continued Professional  
Development Manager,**  
Education, Schools and  
Inclusion

“Something I found useful was “we run towards what we know.” This made me reflect on DV cases for adults or children returning to abusers.”

**HDRC Public Health Lead**  
Gateshead Public Health Team

## **Strategic Priorities**

GSCP: Child Protection Practice

GSCP: Neglect

GSCP: Domestic Abuse

GSCP: Mental Health

GSAB: Strengthening Safeguarding

GSAB: Learning & Development

GSAB: Prevention of Harm

# The Relationship Between Trauma & Wellbeing

“

*Jude has a wonderful way of speaking that made her talk really engaging; the way she wove the story of trauma through the years/how we build on that understanding really helped to contextualise how we understand things now. I loved the framing of trauma as a wound; while I had heard of that before, it helped me to reconnect with the compassion we need to have when supporting those who have experienced trauma (including ourselves!)*

”

**Mosaic Project Lead,**  
Gateshead Children's Social  
Care and Lifelong Learning

“

I found the examples and analogies used really clear and engaging. It was also a really powerful session overall.

”

**Trainee Clinical  
Psychologist,**  
Gateshead Children's Social  
Care and Lifelong Learning

“

The delivery style was engaging; thought-provoking and knowingly challenging.”

”

**Northumbria Police**

“

Hearing about the SIBAM acronym and how our body and minds actually process trauma was incredibly useful.

”

**Assessing Officer,**  
Gateshead Integrated  
Adults Social Care Service

“

The lecture as a whole was excellent and very engaging.

”

**Senior Practitioner,**  
Gateshead Integrated  
Adults Social Care Service

# Responding to Allegations of Abuse Against Professionals

**Attendees: 20**

**Evaluation:** ☆☆☆☆

To support Safeguarding Week 2025, Gateshead's Local Authority Designated Officer - Michelle Farry - delivered a session aimed at supporting practitioners to develop their knowledge of the role and how to respond appropriately to allegations of abuse against professionals. Practitioners explored: the procedures and responsibilities involved in responding to allegations or concerns of abuse by those working with children, including referral pathways, behavioural indicators that someone may be unsuitable to work with children, and the importance of supporting those involved through transparent and consistent processes.

“The use of statistics, useful contacts, what to do in different scenarios was good.”

*Therapeutic Residential Worker,  
Action for Children*

“The Q&A session with the facilitator at the end of the session was helpful.”

*Principal,  
Emmanuel Schools Foundation*

## Measuring Impact

We asked attendees: **how do you intend to apply your learning to your practice moving forward?** They said:

- “I will pass on key information to Sports Clubs/Physical Activity Providers to raise awareness in the Gateshead area, as often I think they still just make referrals to the National Governing Body of the Sport.”
- “I will share with the safeguarding team the importance of recognising when/if threshold been passed and how to move forward.”
- “I will use the information to support our DSL in her role.”

We also asked: **are there any aspects of the training that could be improved?** They said:

- “It would be good to have opportunities for in-person training events in the future. This would be really helpful in terms of networking and accessing and sharing expertise.”

# Substance Misuse & Young People

**Attendees: 7**

**Evaluation:** ☆☆☆☆☆

Positive Futures' final session of the week highlighted the impact of substance abuse on young people, an issue which intersects all safeguarding priorities – from child protection and neglect to domestic abuse, serious youth violence, and mental health. The session highlighted some of the reasons that a young person may misuse substances and explored current trends locally and nationally, equipping practitioners with up-to-date knowledge and strategies to reduce the risk of harm.

## Measuring Impact

We asked attendees: ***how do you intend to apply your learning to your practice moving forward?*** They said:

- "I am now more aware of the service and how to refer in."

We also asked: ***are there any aspects of the training that could be improved?*** We did not receive any feedback in response to this question.

“

Positive Futures' training was amazing and very passionate.

”

*Anonymous*

“

The training was really valuable and provided information that will be great in practice.

”

*Social Work Trainee,  
Gateshead Integrated Adults  
Social Care Service*

## Strategic Priorities

*GSCP: Child Protection Practice*

*GSCP: Serious Youth Violence & Knife Crime*

*GSCP: Mental Health*

# Domestic Abuse: Supporting Children, Victims & Perpetrators

**Attendees: 14**

**Evaluation:** ☆☆☆☆☆

Gateshead's Domestic Abuse Team ended our third day of events with an informative session focused on the support available for children, victims and perpetrators of domestic abuse. Practitioners developed their understanding of referral thresholds and pathways, explored the behaviour-change programme on offer, and discussed the different forms domestic abuse can take. The session provided a comprehensive overview of this type of harm and the mechanisms in place to reduce risk, aligning with the GSCP's strategic aim of reducing the impact of domestic abuse on children and young people and protecting them from harm.

## Measuring Impact

We asked attendees: ***how do you intend to apply your learning to your practice moving forward?*** They said:

- "I will be more aware of pathways for referral and how to describe the service to others."
- "I now have more awareness to be able to report concerns."
- "I will link in more with young people around DV in relationships."

We also asked: ***are there any aspects of the training that could be improved?*** They said:

- "More interaction to create discussion around DA and individual job roles."

“The video and knowledge of the instructor was good.”

**Occupational Therapist,  
CNTW**

“The aspects relating to the impact of DV on children were very relevant for me.”

**Anonymous**

“This was a thorough overview of the service and support provided.”

**Team Leader,  
Change, Grow, Live**

### **Strategic Priorities**

GSCP: Child Protection Practice  
GSCP: Domestic Abuse  
GSCP: Mental Health  
GSAB: Prevention of Harm

# The Children's Society: Immersive Disruption Workshop

**Attendees: 21**

**Evaluation:** ☆☆☆☆☆

The Children's Society delivered two immersive disruption workshops, engaging practitioners in different roles and responsibilities within a simulated strategy meeting. The interactive scenario was interspersed with information on which organisations can be called upon to support disruption efforts, challenging questions to promote professional curiosity, and opportunities to constructively challenge one another.

## Measuring Impact

We asked attendees: ***how do you intend to apply your learning to your practice moving forward?*** They said:

- "I will think of CSE in wider terms, such as where in the community can be used to safeguard young people and disrupt criminals."
- "Better partnership working and being aware of language used with young people."
- "I will think outside the box more with regards to who needs to be involved in disruption activity."
- "Continuing to name and highlight use of problematic language and feeling more confident to challenge this."
- "I recognise the importance of mapping and getting the right people at the strategy."
- "I will do more research into county lines and how to use disruption without forcing young people into hidden, darker corners."
- "I will explore gut feelings and use professional curiosity."
- "I will think outside the box more about disruption, and research the different civil laws that can be used for disruption."

We also asked: ***are there any aspects of the training that could be improved?*** They said:

- "The person in the language role could have the list of words printed/have it out with other laminated resources for people to refer to and be aware of."
- "More time to delve deeper into case."

# The Children's Society: Immersive Disruption Workshop

“

*I liked the interactive strategy meeting as I have not attended one before. It gave me an idea of what to expect as I am new in post.*

”

**Young Adults Resilience Worker,**  
Change, Grow, Live

“

*It was valuable being in multi-agency training and hearing different perspectives during the session.*

”

**Trainee Clinical Psychologist,**  
CNTW

“

*It was interesting to see the internal workings of strategy meetings and how other organisations operate.*

”

**Police Constable,**  
Northumbria Police

“

*I liked the interactivity of it and how everyone was involved.*

”

**Student Social Worker,**  
Gateshead Children's Social Care and Lifelong Learning

“

*Very interactive. Enjoyed the case study and the different routes it could go down.*

”

**Vulnerable Adolescents Worker,**  
Gateshead Children's Social Care and Lifelong Learning

## **Strategic Priorities**

GSCP: Child Protection Practice  
GSCP: Serious Youth Violence & Knife Crime  
GSCP: Neglect  
GSCP: Mental Health



# Safeguarding in Sport Workshop

We partnered with RISE North East and our colleagues from the Newcastle and Northumberland Safeguarding Adults Boards to deliver an evening session focused on safeguarding adults in sport. Throughout the session, we discussed the key safeguarding responsibilities that we all have, including practical steps to creating safe and inclusive cultures within clubs. Participants were supported to learn more about different types of abuse and neglect, including how to respond to disclosures and concerns whilst upholding the six key principles of safeguarding as outlined in the Care Act (2014).



## **Strategic Priorities**

*GSAB: Strengthening Safeguarding*  
*GSAB: Learning & Development*  
*GSAB: Prevention of Harm*  
*GSAB: Involvement & Engagement*

# Barnardo's: Father-Inclusive Practice

**Attendees: 10**

**Evaluation:** ☆☆☆☆☆

Barnardo's delivered a thought-provoking session on father-inclusive practice, immersing practitioners in the realities of working effectively with dads and male carers in safeguarding and early help contexts. Throughout the workshop, practitioners explored the importance of recognising fathers as central, not peripheral, to a child's world; interactive activities and reflective discussions challenged unconscious bias and traditional assumptions, strongly aligning with themes from recent rapid reviews which highlighted the impact of 'hidden males', as well as gaps in information sharing and the unintentional 'sidelining' of fathers upon a child's safety, wellbeing and outcomes.

## Measuring Impact

We asked attendees: **how do you intend to apply your learning to your practice moving forward?** They said:

- "When I liaise with parents in my role, it will make me really consider my engagement with the dad/male carer."
- "I intend to spread my learning to my colleagues of family time workers and family support workers to allow learning and reflective practice."
- "By reflecting on our 0-19 contract and picking it up at the Vulnerable Babies group I'm part of with Newcastle colleagues."
- "By spending more time with dads and gaining their thoughts and views."

We also asked: **are there any aspects of the training that could be improved?** They said:

- "In-person training/more discussions with peers."

“ Sarah was very knowledgeable and provided great explanation and exploration. ”

**Family Time Worker,**  
Gateshead Children's  
Social Care and Lifelong  
Learning

“ I really enjoyed the quiz at the start. The whole session provoked a lot of thinking. ”

**Social Worker,**  
Gateshead Children's  
Social Care and Lifelong  
Learning

“ The website! I did not know this was available and I will implement this into my work. ”

**Social Worker,**  
Gateshead Children's  
Social Care and Lifelong  
Learning

# Barnardo's: Father-Inclusive Practice

“

*I thought this was a great session – the content was very thought provoking and the project in Newcastle feels very needed and forward thinking. It was presented in a really accessible way (no jargon etc). I'd really like to be part of something like that if Gateshead wanted Dads to be involved – I would have really valued that when my wife was pregnant with our kids. The quiz at the start was a great way to get you involved too!*

”

**Advisory Teacher,**  
Education, Schools and  
Inclusion Team

“

*Very powerful and relevant statistics/stories were provided at the start which was useful as they stayed at the forefront of my mind when thinking about the rest of the information. Engaging throughout the session but beginning with a quiz really got the thoughts going. Useful resources and links provided to take away and apply to our services. Provided good opportunity to reflect on the services we provide and how well we do engage well with Dads but also areas we can improve.*

”

**Advanced Practitioner,**  
Gateshead Public Health  
Team

## **Strategic Priorities**

GSCP: Child Protection Practice  
GSCP: Neglect  
GSCP: Mental Health

# Dementia Wristbands & the Herbert Protocol

**Attendees: 22**

**Evaluation:** ☆☆☆☆☆

Colleagues from Gateshead Adult Social Care and Northumbria Police delivered an informative session on dementia wristbands, highlighting how these can be used to support people living with dementia as part of wider Safe and Found initiatives. Practitioners explored how this newly-launched technology enables families and professionals to share information in advance, ensuring a faster and more coordinated response if a vulnerable adult goes missing. The session provided practical guidance on how to promote these initiatives, support caregivers, and improve the safety and wellbeing of adults in our community.

## Measuring Impact

We asked attendees: **how do you intend to apply your learning to your practice moving forward?** They said:

- "Understanding about how SAFO works and how to tie these strategies in with wider support was helpful."
- "I will cascade this information to my team."
- "I will register the people we support who are vulnerable to missing on the online safe and found database."
- "I will promote the service more and discuss the wristbands."
- "I will share the information with families."

We also asked: **are there any aspects of the training that could be improved?** They said:

- "I would have liked to receive more leaflets or ways to spread the word."

### Strategic Priorities

GSAB: Strengthening  
Safeguarding  
GSAB: Prevention of Harm

“  
Very practical and useful  
resource that can be  
implemented  
immediately.”

**Social Worker,**  
Gateshead Integrated  
Adults Social Care  
Service

“  
I enjoyed physically  
seeing the tech and the  
web pages so we know  
what it looks like.”

**Assessing Officer,**  
Gateshead Integrated  
Adults Social Care  
Service

# Prevent & Channel Panel Workshop

**Attendees: 10**

**Evaluation:** ☆☆☆☆

Our final session of the week focused on Prevent and the role of the Channel Panel. The session explored how Prevent supports individuals who may be vulnerable to radicalisation, the importance of early intervention, and the responsibilities of practitioners in recognising and reporting concerns. Practitioners deepened their understanding of how Channel brings partner agencies together to assess risk and implement tailored support, whilst ensuring that individuals receive proportionate, person-centred interventions. The session also explored indicators of vulnerability and the importance of professional curiosity when working with both children and adults in safeguarding contexts.

## Measuring Impact

We asked attendees: ***how do you intend to apply your learning to your practice moving forward?*** They said:

- "I will be vigilant, become more aware and put this knowledge into practice when needed."
- "I will deliver training with staff to refresh them on what to look out for and what to do if any concerns are raised."

We also asked: ***are there any aspects of the training that could be improved?*** They said:

- "Seeing an anonymised referral."
- "More virtual sessions would be ideal if possible."

“  
Very informative. The case study was helpful to pull everything together.”

**Anonymous**

“  
I liked that it was short and impactful - enjoyed the case study too!”

**Practitioner,  
Positive Futures**

### **Strategic Priorities**

*GSCP: Child Protection Practice*

*GSAB: Strengthening Safeguarding*

*GSAB: Prevention of Harm*

This report highlights the power of multi-agency collaboration.

When we come together to share our knowledge, expertise and insights, we establish proactive and person-centred approaches to safeguarding that ultimately improve outcomes for children and vulnerable adults. Throughout the week, workshops, informal discussions and opportunities for reflection were clearly valued by practitioners in attendance; every conversation, contribution and question asked contributes to a culture of continuous improvement.

Once again, on behalf of the Safeguarding Business Unit, thank you to each and every one of you that contributed to the week.

